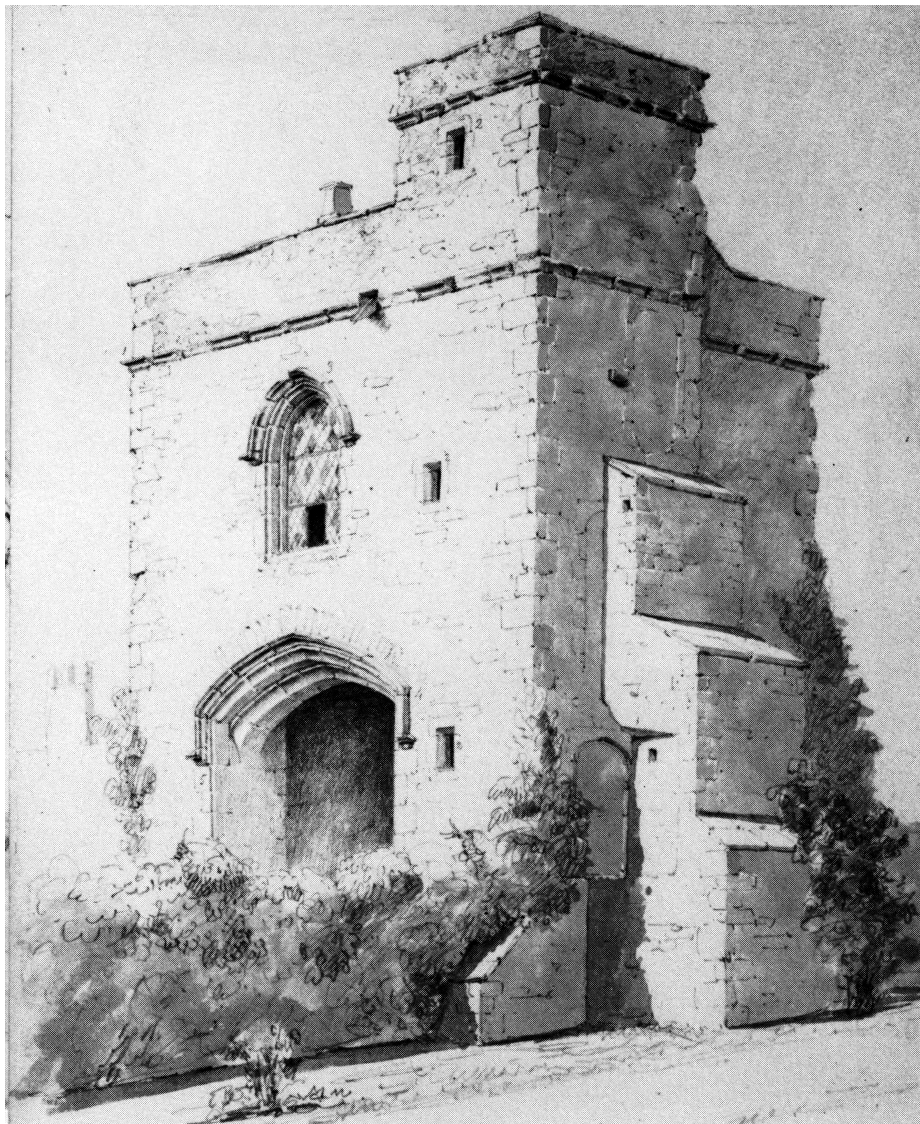


Prior's Gate in 1843



Prior's Gate, seen from the north-west, drawn by William Twopeny in Sep. 1843 (Swain 1986, pl. 67). This corner of the gate only became visible in the 1830s, when the grammar school, a wooden building which butted up against it, was demolished.

In 1837 the site of the school was leased by the dean and chapter to Edward Twopeny, the owner of the neighbouring house to the north (now called Prior's Gate House), who incorporated it into his garden. (The facts are explained by Livett (1895, pp. 45–6); the original lease is MALSC, DRc/Ele/167/1.) Edward Twopeny was William's elder brother.

The stone frame of a fireplace rescued from the old school was set into the new garden-wall, on the inside (Rye 1887, p. 68). Possibly that was William Twopeny's idea.

The drawing reproduced by Swain is one of the large collection bequeathed by Twopeny to the British Museum. It is in album IVB (1874,0214.416–520); in the printed catalogue it is item 82 (Binyon 1907, p. 223). Some features have small numerals marked alongside them: I assume that these numerals referred to drawings of details, but do not know whether those drawings are extant.

REFERENCES

- Binyon 1907 L. Binyon, *Catalogue of drawings by British artists*, vol. 4 (British Museum, 1907).
- Livett 1895 G. M. Livett, 'Medieval Rochester', *Archaeologia Cantiana*, 21 (1895), 17–72.
- Rye 1887 W. B. Rye, 'The ancient episcopal palace at Rochester, and Bishop Fisher', *Archaeologia Cantiana*, 17 (1887), 66–76.
- Swain 1986 E. R. Swain, *William Twopeny in Kent* (Doddington, 1986).